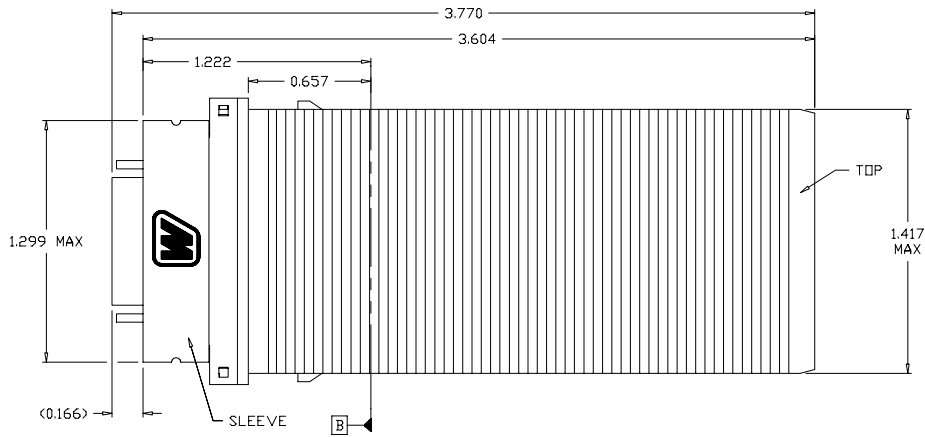
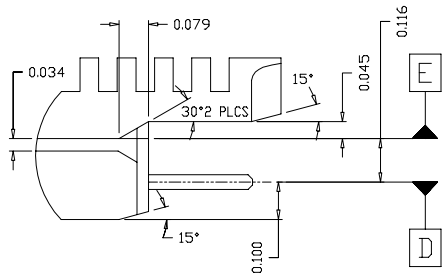
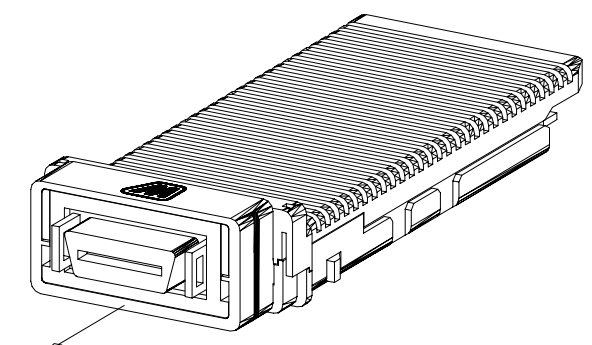
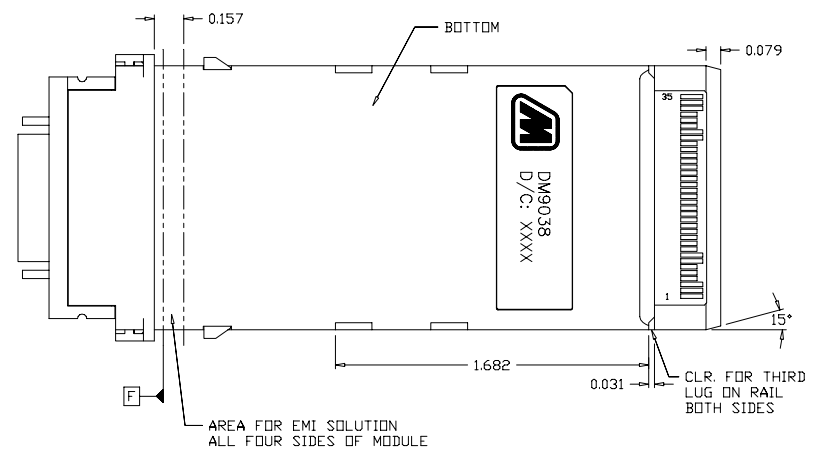
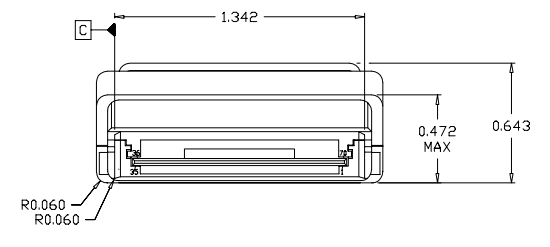
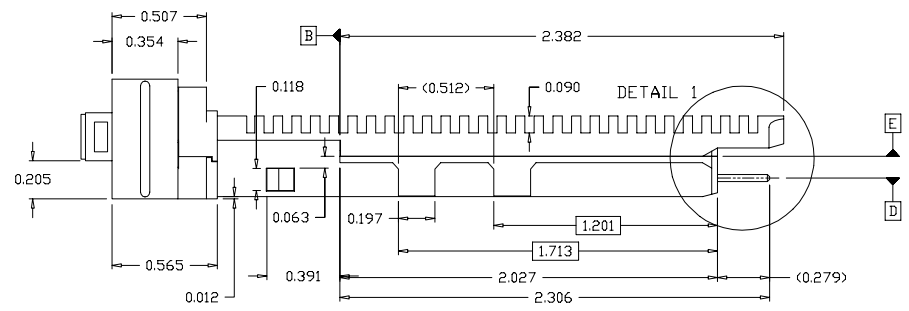
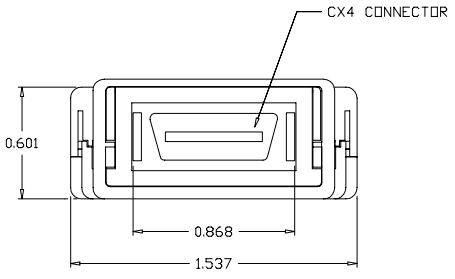
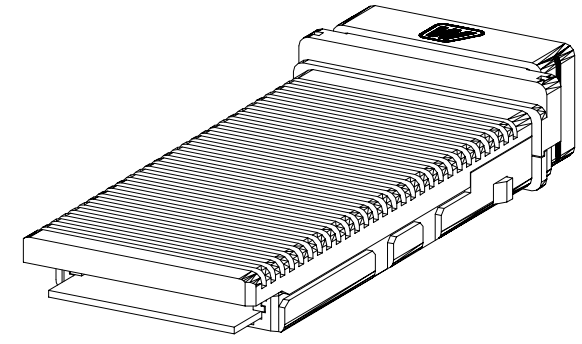


DETAIL 1
(SCALE 2X)



REVISION AND CHANGE EFFECTIVITY DATE				
LTR.	ECN	DESCRIPTION	DATE	APP'D.



PULL SLEEVE TO RELEASE FROM CAGE

NOTES:

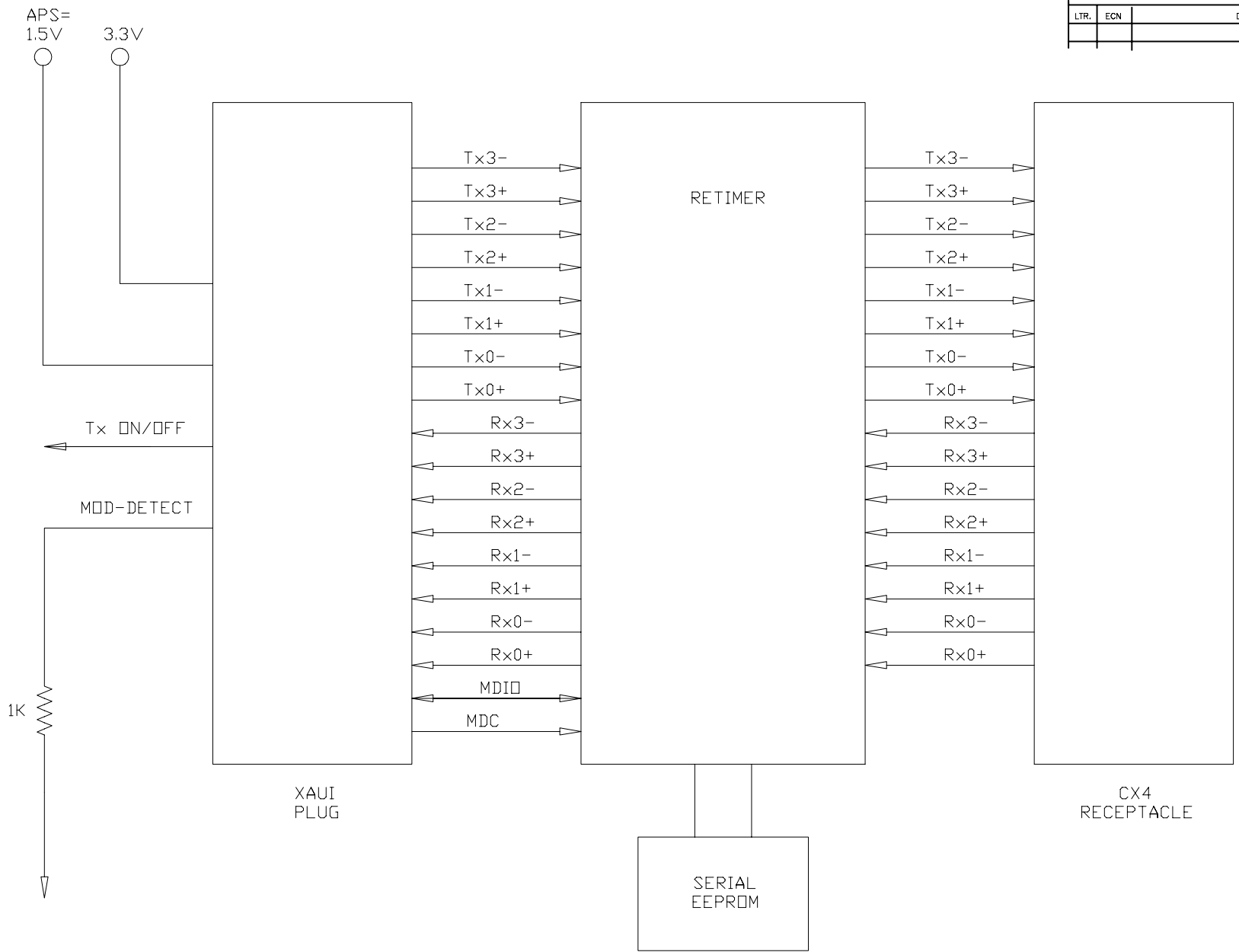
- HOUSING MATERIAL (TOP AND BOTTOM): ZAMAC 3
PLATING: 0.0002"-0.0003" Ni OVER 0.0002"-0.0003 Cu
- SLEEVE MATERIAL: ZAMAC 3
PLATING: 0.0002"-0.0003" Ni OVER 0.0002"-0.0003 Cu
- CX4 MATERIAL: LCP RESIN (94V-0); CONDUCTOR: COPPER ALLOY
PLATING: CONTACT: GOLD (PAGOS); TERMINAL: PALLADIUM; COVER: ZINC
- PCB-.039" THICK; 30µin. MIN GOLD PLATING OVER 50µin. MIN NICKEL ON CONTACT AREA
- LOCK MATERIAL: NYLON

DO NOT SCALE DRAWING.

EXPERIMENTAL NO:		DIVISION ASSIGNED: dataMate Division	
TOLERANCE UNLESS OTHERWISE SPECIFIED	MATERIAL: SEE NOTES	DRAWN BY: A. PIRILLIS	DATE: 4/17/06
METRIC INCHES	FINISH: SEE NOTES	CHECKED BY: J. NOWAK	DATE: 4/17/06
± FRACTION ± DECIMAL ± .010 ± .005	ANGLES ±	ENGR. APPROVAL: B. SKEPNEK	DATE: 4/17/06
TOOLING DWG <input type="checkbox"/>	PART DWG <input type="checkbox"/>	APPROVED BY: A. CHIAPPETTA	DATE: 4/17/06
BREAK SHARP EDGES REMOVE ALL BURRS		PART NO. CLASSIFICATION:	
THE INFORMATION DISCLOSED IN THIS DOCUMENT IS PROPRIETARY TO METHODE ELECTRONICS, INC. AND MAY NOT BE USED FOR MANUFACTURE OR ANY OTHER PURPOSE WITHOUT THE WRITTEN CONSENT OF METHODE. DETAILS SUBJECT TO CHANGE AS THEY MAY EVOLVE WITH RESPECT TO PRODUCT IMPROVEMENT.		TITLE: X2 x CX4 TRANSCEIVER MODULE	
SIZE: C	CODE IDENT.	DWG. NUMBER: DM9038	Rev.
SCALE:			SHT. 1 OF 3



REVISION AND CHANGE EFFECTIVITY DATE				
LTR.	ECN	DESCRIPTION	DATE	APP'D.



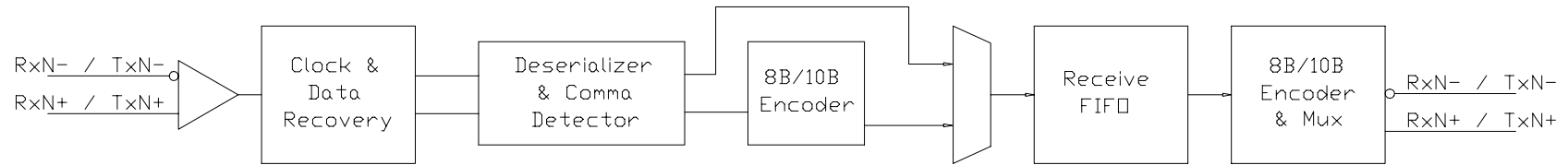
DO NOT SCALE DRAWING.



EXPERIMENTAL NO:		DIVISION ASSIGNED: dataMate Division	
TOLERANCE UNLESS OTHERWISE SPECIFIED		DRAWN BY: A. PIRILLIS DATE: 4/17/06	
MATERIAL: SEE NOTES		CHECKED BY: J. NOWAK DATE: 4/17/06	
METRIC INCHES		ENGR. APPROVAL: B. SKEPNEK DATE: 4/17/06	
± FRAC ±		APPROVED BY: A. CHIAPPETTA DATE: 4/17/06	
± DEC XX ± .010		PART NO. CLASSIFICATION:	
± XXX ± .005		TITLE: X2 x C4 TRANSCEIVER MODULE	
ANGLES ±		SIZE: C	
TOOLING DWG <input type="checkbox"/>		CODE IDENT.:	
PART DWG <input type="checkbox"/>		DWG. NUMBER: DM9038	
BREAK SHARP EDGES		Rev.:	
REMOVE ALL BURRS		SCALE:	
THE INFORMATION DISCLOSED IN THIS DOCUMENT IS PROPRIETARY TO METHODE ELECTRONICS, INC. AND MAY NOT BE USED FOR MANUFACTURE OR ANY OTHER PURPOSE WITHOUT THE WRITTEN CONSENT OF METHODE. DETAILS SUBJECT TO CHANGE AS THEY MAY EVOLVE WITH RESPECT TO PRODUCT IMPROVEMENT.			
		SHT. 2 OF 3	

REVISION AND CHANGE EFFECTIVITY DATE				
LTR.	ECN	DESCRIPTION	DATE	APP'D.

4 Channels of Transmit / Receive Pairs @ 3.125Gb/s



Retimer Block Diagram



DO NOT SCALE DRAWING.

EXPERIMENTAL NO:		DIVISION ASSIGNED: dataMate Division		
TOLERANCE UNLESS OTHERWISE SPECIFIED		MATERIAL: SEE NOTES	DRAWN BY: A. PIRILLIS	DATE: 4/17/06
METRIC	INCHES	FINISH: SEE NOTES	CHECKED BY: J. NOWAK	DATE: 4/17/06
±	FRAC ±		ENGR. APPROVAL: B. SKEPNEK	DATE: 4/17/06
±	DEC XX ± .010	SEE NOTES	APPROVED BY: A. CHIAPPETTA	DATE: 4/17/06
±	XXX ± .005		PART NO. CLASSIFICATION:	
±	ANGLES ±	TITLE: X2 x CX4 TRANSCIVER MODULE		
TOOLING DWG <input type="checkbox"/>		SIZE: C		
PART DWG <input type="checkbox"/>		CODE IDENT.		
BREAK SHARP EDGES		DWG. NUMBER: DM9038		
REMOVE ALL BURRS		Rev.		
THE INFORMATION DISCLOSED IN THIS DOCUMENT IS PROPRIETARY TO METHODE ELECTRONICS, INC. AND MAY NOT BE USED FOR MANUFACTURE OR ANY OTHER PURPOSE WITHOUT THE WRITTEN CONSENT OF METHODE. DETAILS SUBJECT TO CHANGE AS THEY MAY EVOLVE WITH RESPECT TO PRODUCT IMPROVEMENT.		SCALE:		
		SHT. 3 OF 3		