

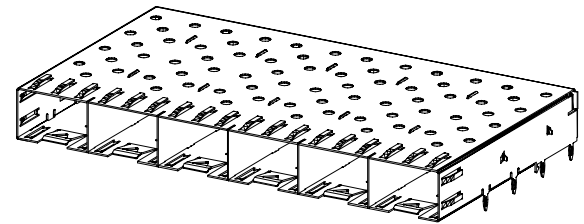
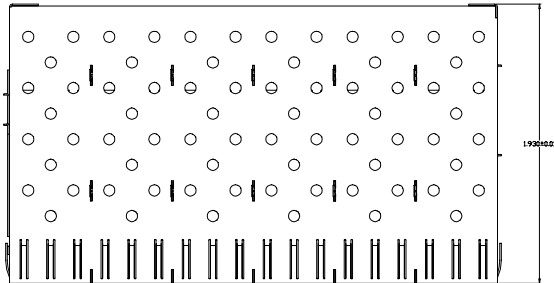
PIN TYPES
(SCALE 2X)

HALF LENGTH SMALL PIN



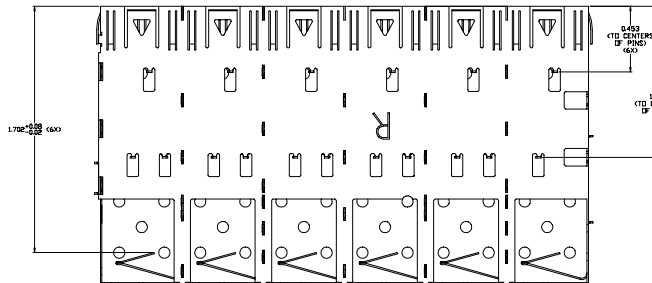
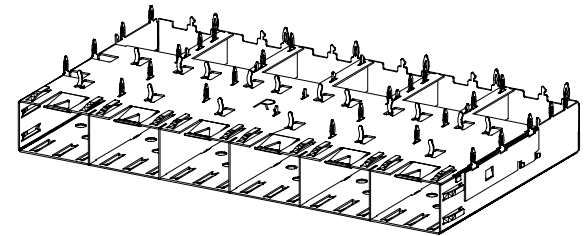
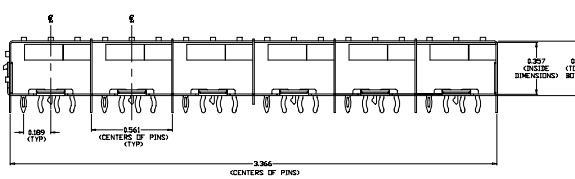
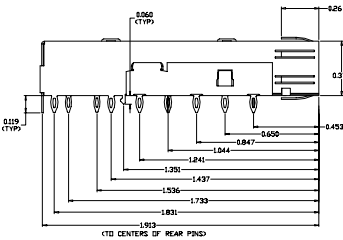
CHASSIS GROUND

LARGE PIN



REVISION AND CHANGE EFFECTIVITY DATE

LTG.	ECN	DESCRIPTION	DATE	APP'D.



ORDERING INFO:

DM7044-6-X

SERIES

6 PORTS

PLATING OPTIONS:

-R FOR 100µIN MATTE TIN OVER 50µIN NICKEL
RoHS COMPLIANT
NOT INTENDED FOR REFLOW - WAVE SOLDER ONLY
WAVE TEMP 260°C FOR 6 SEC. MAX

-G FOR FLASH GOLD OVER 50µIN NICKEL
RoHS COMPLIANT
REFLOW COMPATIBLE - MAX REFLOW TEMP. 260°C

-N FOR 100µIN NICKEL
RoHS COMPLIANT
REFLOW COMPATIBLE - MAX REFLOW TEMP. 260°C



DO NOT SCALE DRAWING.

NOTES:

- 1) CAGE MATERIAL: 0.010" THICK BRASS ALLOY; C2680 - FULL HARD
- 2) PLATING: SEE ORDERING INFO
- 3) CAGE IS SOLDERED AT SEAMS
- 4) CAGE IS STAMPED "R" FOR ROHS COMPLIANCE
- 5) OPERATING AND STORAGE TEMPERATURE: -40°C TO +160°C

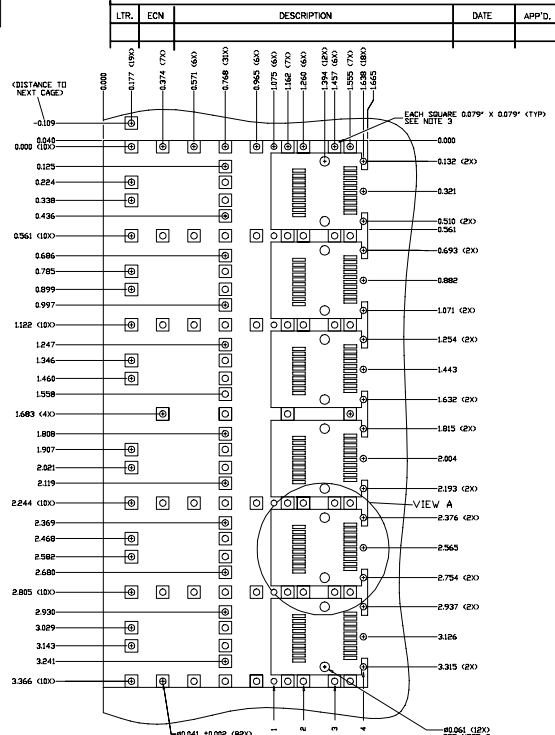
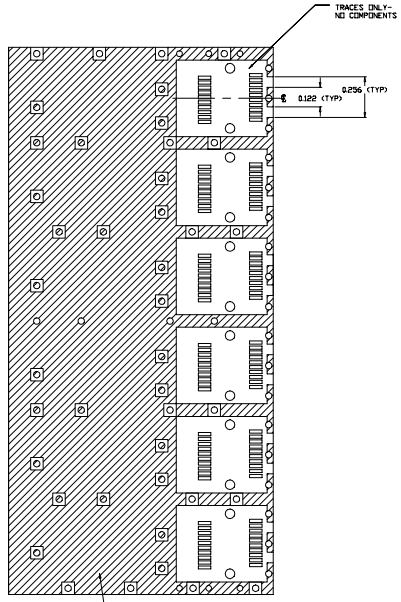
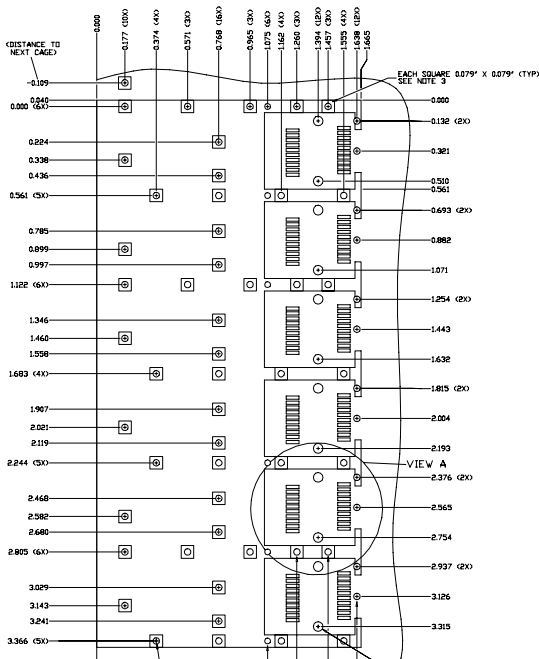
EXPERIMENTAL NO:		DIVISION ASSIGNED: dataMATE Division	
TOLERANCE UNLESS OTHERWISE SPECIFIED		DRAWN BY: DATE	
METRIC INCHES		A. PIRILLIS 02/22/08	
FRACS DEC. XX ± .010		CHECKED BY:	
XXX ± .005		J. NOWAK 02/22/08	
ANGLES ±		ENGR. APPROVAL:	
TOOLING DWG □		B. SKEPNEK 02/22/08	
PART DWG □		APPROVED BY:	
BREAK SHARP EDGES REMOVE ALL BURRS		A. CHIAPPETTA 02/22/08	
MATERIAL: SEE NOTES		PART NO. CLASSIFICATION:	
FINISH: SEE NOTES		TITLE	
		SFP EMI 6 PORT CAGE WITH PRESS FIT PINS BELLY TO BELLY	
		SIZE	CODE IDENT.
		C	
		DWG. NUMBER	Rev.
		DM7044-6-X	
		SCALE:	SHT. 1 OF 2

THE INFORMATION DISCLOSED IN THIS DOCUMENT IS PROPRIETARY TO METHODE ELECTRONICS, INC. AND MAY NOT BE USED FOR MANUFACTURE OR ANY OTHER PURPOSE WITHOUT THE WRITTEN CONSENT OF METHODE. DETAILS SUBJECT TO CHANGE AS THEY MAY CHANGE WITH RESPECT TO PRODUCT IMPROVEMENT.

RECOMMENDED FOOTPRINT

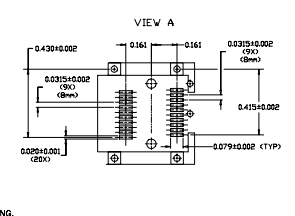
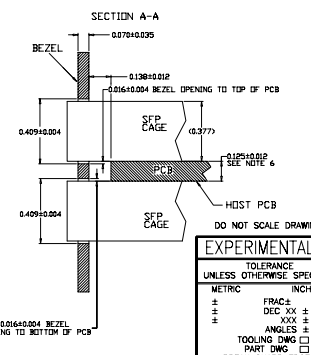
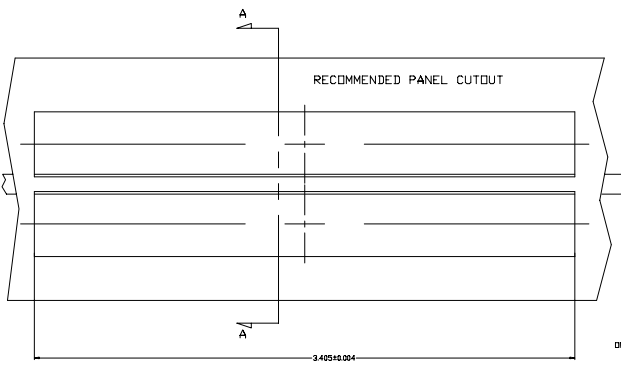
REVISION AND CHANGE EFFECTIVITY DATE

LTR.	ECN	DESCRIPTION	DATE	APP'D.



SINGLE SIDED

BELLY TO BELLY



- NOTES:
- 1) DIMENSIONS ARE TO CENTER OF HOLES OR PADS
 - 2) THRU HOLES, PLATING OPTIMUM
 - 3) PADS AND VIAS ARE CHASSIS GROUND
 - 4)
 - ▨ TRACES ONLY
NO COMPONENTS
 - NO TRACES
NO COMPONENTS
(EXCEPT CHASSIS GROUND)
 - 5) 0.125" THICK BOARD FOR DOUBLE SIDED.
 - 6) 0.099" ALLOWABLE THICKNESS FOR SINGLE SIDED.
- dataMATE

EXPERIMENTAL NO:		DIVISION ASSIGNED: dataMate Division	
TOLERANCE UNLESS OTHERWISE SPECIFIED	MATERIAL:	DRAWN BY: A. PIRILLIS	DATE: 02/22/08
METRIC INCHES	SEE NOTES	CHECKED BY: J. NOWAK	DATE: 02/22/08
± FRACTION ± DEC. XX ± .010	FINISH:	ENGR. APPROVAL: B. SKEPNEK	DATE: 02/22/08
± ± .XXX ± .005	SEE NOTES	APPROVED BY: A. CHIAPPETTA	DATE: 02/22/08
TOOLING DWG <input type="checkbox"/>		PART NO. CLASSIFICATION:	
PART DWG <input type="checkbox"/>			
BREAK SHARP EDGES			
REMOVE ALL BURRS			
<p>THE INFORMATION DISCLOSED IN THIS DOCUMENT IS PROPRIETARY TO dataMATE ELECTRONICS, INC. AND MAY NOT BE USED FOR MANUFACTURE OR ANY OTHER PURPOSE WITHOUT THE WRITTEN CONSENT OF dataMATE. DRILLS SUBJECT TO CHANGE AS THEY MAY OCCUR WITH RESPECT TO PRODUCT IMPROVEMENT.</p>			
SIZE C	CODE IDENT.	DWG. NUMBER DM7044-6-X	Rev.
SCALE:			SHI.2 OF 2