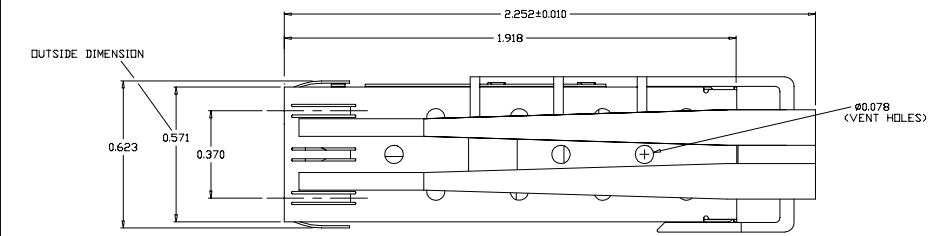
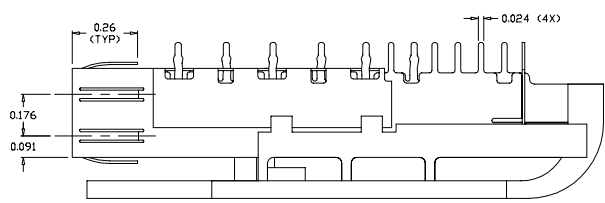
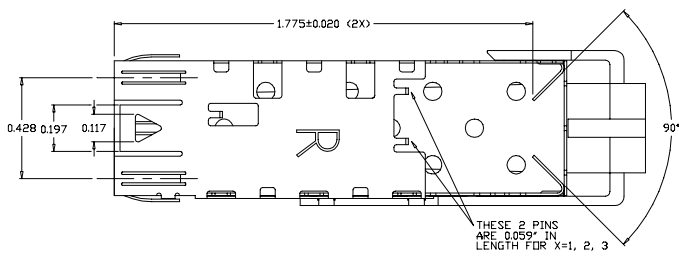
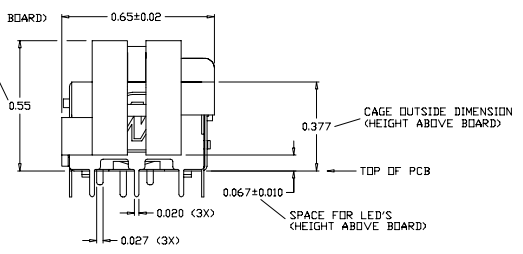
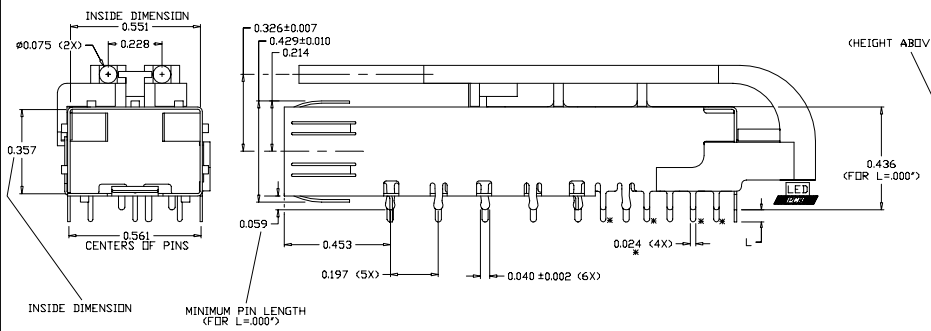


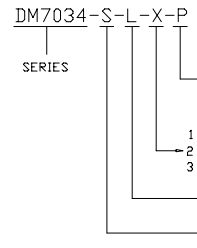
REVISION AND CHANGE EFFECTIVITY DATE				
LTR.	ECN	DESCRIPTION	DATE	APP'D.
A	EDISZ7	ADJUSTED DIMS; INC. TOL. ON PCB; ADDED NOTES FOR	03/23/07	AP
		RoHS, OPERATING AND STORAGE TEMP. AND LED		
B		CORRECTED TITLE BLOCK DESCRIPTION	03/26/10	AP



- NOTES:
 1) MATERIAL: 0.010" THICK BRASS ALLOY; C2680 - FULL HARD
 2) PLATING: SEE PLATING OPTIONS
 3) CAGE IS SOLDERED AT SEAM AT 5 LOCATIONS
 4) LIGHTPIPE MATERIAL: CLEAR POLYCARBONATE
 5) CAGE IS STAMPED "R" FOR RoHS COMPLIANCE
 6) MAXIMUM LED HEIGHT: 0.057"
 7) OPERATING AND STORAGE TEMPERATURE: -40°C TO +130°C



ORDERING INFO:



PLATING OPTIONS:

- R FOR 100µIN MATTE TIN OVER 50µIN NICKEL RoHS COMPLIANT
- G FOR FLASH GOLD OVER 50µIN NICKEL RoHS COMPLIANT
- N FOR 100µIN NICKEL RoHS COMPLIANT

- 1 - L = .000" (RECOMMENDED PCB THICKNESS OF LESS THAN .055)
- 2 - L = .021" (RECOMMENDED PCB THICKNESS BETWEEN .056-.078)
- 3 - L = .051" (RECOMMENDED PCB THICKNESS BETWEEN .079-.108)

- WITH LIGHTPIPE
- DENOTES SOLDERABLE PINS



DO NOT SCALE DRAWING.

EXPERIMENTAL NO:		DIVISION ASSIGNED: dataMATE Division	
TOLERANCE UNLESS OTHERWISE SPECIFIED		DRAWN BY: DATE	
METRIC INCHES		A. PIRILLIS 11/28/06	
FRACTIONAL DEC: XX ± .010		CHECKED BY: B. SKEPNEK 11/28/06	
XXX ± .005		ENGR. APPROVAL: J. NOWAK 11/28/06	
ANGLES ±		APPROVED BY: A. CHIAPPETTA 11/28/06	
TOOLING DWG □		PART NO. CLASSIFICATION:	
PART DWG □		SIZE CODE IDENT. DWG. NUMBER	
BREAK SHARP EDGES REMOVE ALL BURRS		C DM7034-S-L-X-P Rev. B	
THE INFORMATION DISCLOSED IN THIS DOCUMENT IS PROPRIETARY TO METHODE ELECTRONICS, INC. AND MAY NOT BE USED FOR MANUFACTURE OR ANY OTHER PURPOSES WITHOUT THE WRITTEN CONSENT OF METHODE. DETAILS SUBJECT TO CHANGE AS THEY MAY CHANGE WITH RESPECT TO PRODUCT IMPROVEMENT.		SCALE: SHIT.1 OF 2	

