

REVISION AND CHANGE EFFECTIVITY DATE				
LTR.	ECN	DESCRIPTION	DATE	APP'D.
A	ECM49	ADDED PLATING OPTIONS	03/09/05	AP
B	ECIS88	ADDED TAB DIMENSIONS	08/30/06	AP
C	ECIS27	ALL PLATING OPTIONS RoHS, INC. TDL ON PCB	03/23/07	AP
		ADDED OPERATING AND STORAGE TEMP NOTE		

NOTES:

- 1) MATERIAL: 0.010" THICK BRASS ALLOY; C2680 - FULL HARD
- 2) PLATING: SEE PLATING OPTIONS
- 3) CAGE IS SOLDERED AT SEAM AT 5 LOCATIONS
- 4) CAGE IS STAMPED "R" FOR RoHS COMPLIANCE
- 5) OPERATING AND STORAGE TEMPERATURE: -40°C TO +160°C

ORDERING INFO:

DM7034-085-X

SERIES

PLATING OPTIONS:

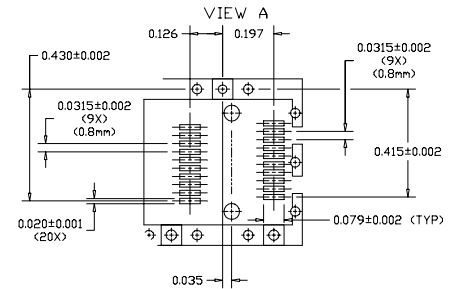
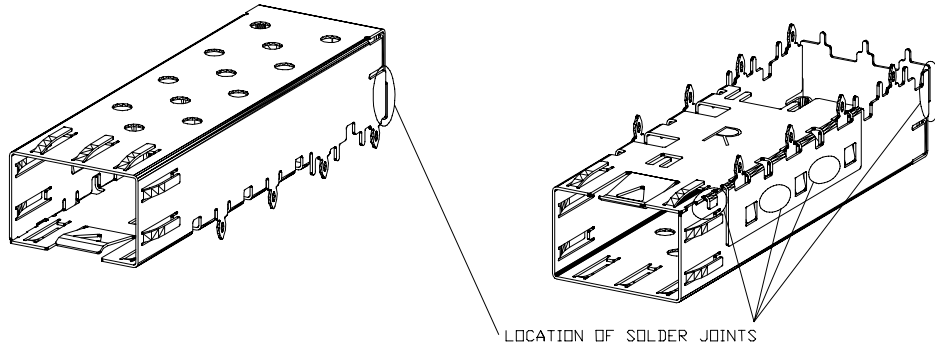
- R FOR 100µIN MATTE TIN OVER 50µIN NICKEL
RoHS COMPLIANT
 - G FOR FLASH GOLD OVER 50µIN NICKEL
RoHS COMPLIANT
 - N FOR 100µIN NICKEL
RoHS COMPLIANT
- DENOTES SHORT PIN LENGTH (0.085")

DO NOT SCALE DRAWING.

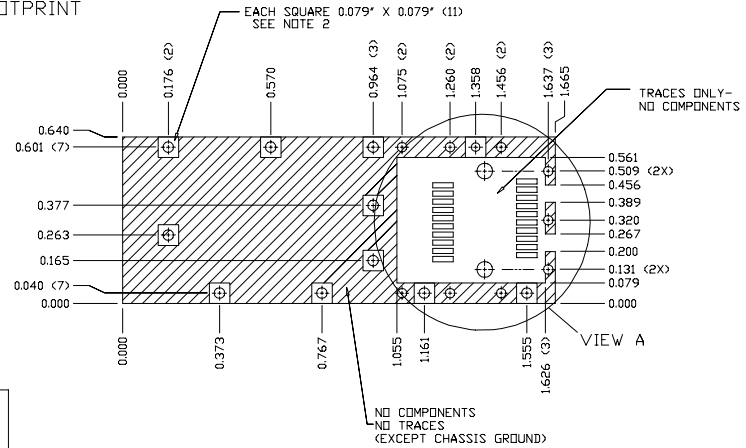
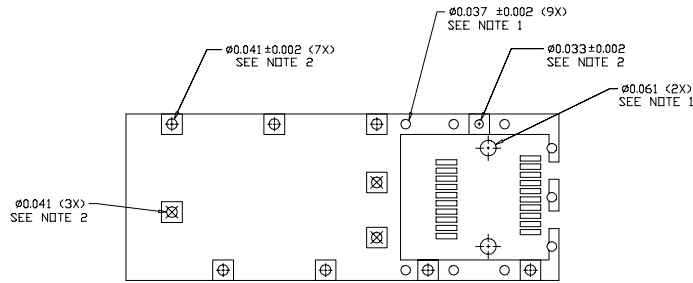
EXPERIMENTAL NO:		DIVISION ASSIGNED: dataMate Division	
TOLERANCE UNLESS OTHERWISE SPECIFIED	MATERIAL: SEE NOTES	DRAWN BY: B. SKEPNEK	DATE: 9/29/03
METRIC ±	INCHES ±	CHECKED BY: J. NOWAK	DATE: 9/29/03
FRAC: DEC: XX ± .010	XXX ± .005	ENGR. APPROVAL: B. SKEPNEK	DATE: 9/29/03
ANGLES ±		APPROVED BY: A. CHIAPPETTA	DATE: 9/29/03
TOOLING DWG □		PART NO. CLASSIFICATION:	
PART DWG □			
BREAK SHARP EDGES			
REMOVE ALL BURRS			
<small>THE INFORMATION DISCLOSED IN THIS DOCUMENT IS PROPRIETARY TO METHODE ELECTRONICS, INC. AND MAY NOT BE USED FOR MANUFACTURE OR ANY OTHER PURPOSE WITHOUT THE WRITTEN CONSENT OF METHODE. DRILLS SUBJECT TO CHANGE AS THEY MAY CHANGE WITH RESPECT TO PRODUCT IMPROVEMENT.</small>		TITLE: SFP CAGE - ONE PIECE SHORT PRESS FIT PINS	SIZE: C
		CODE IDENT.:	DWG. NUMBER: DM7034-085-X
		SCALE:	Rev. C
			SH1.1 OF 2

dataMate

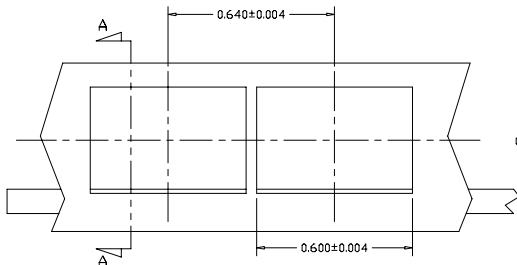
REVISION AND CHANGE EFFECTIVITY DATE				
LTR.	ECN	DESCRIPTION	DATE	APP'D.
A	ECM49	ADDED PLATING OPTIONS	03/09/05	AP
B	ECM38	ADDED TAB DIMENSIONS	08/30/06	AP
C	ECM57	ALL PLATING OPTIONS ROHS, INC. TOL. ON PCB ADDED OPERATING AND STORAGE TEMP NOTE	03/23/07	AP



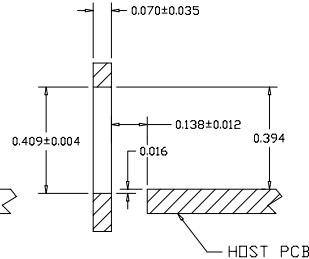
RECOMMENDED FOOTPRINT



RECOMMENDED PANEL CUTOUT



SECTION A-A



NOTES:

- 1) THRU HOLES, PLATING OPTIONAL
- 2) PADS AND VIAS ARE CHASSIS GROUND, 11 PLACES



DO NOT SCALE DRAWING.		EXPERIMENTAL NO:		DIVISION ASSIGNED: dataMATE Division	
TOLERANCE UNLESS OTHERWISE SPECIFIED		MATERIAL: SEE NOTES		DRAWN BY: B. SKEPNEK DATE: 9/29/03	
METRIC INCHES		FINISH:		CHECKED BY: J. NOWAK DATE: 9/29/03	
FRACS: DEC: XX ± .010 XXX ± .005		TOOLING DWG: PART DWG: BREAK SHARP EDGES REMOVE ALL BURRS		ENGR. APPROVAL: B. SKEPNEK DATE: 9/29/03	
APPROVED BY: A. CHIAPPETTA DATE: 9/29/03		PART NO. CLASSIFICATION:		TITLE: SFP CAGE - ONE PIECE SHORT PRESS FIT PINS	
SIZE: C	CODE IDENT.	DWG. NUMBER: DM7034-085-X	Rev. C	SCALE:	
			SHI. 2 OF 2		