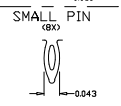
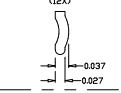
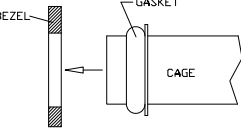


PIN TYPES
(SCALE 2X)

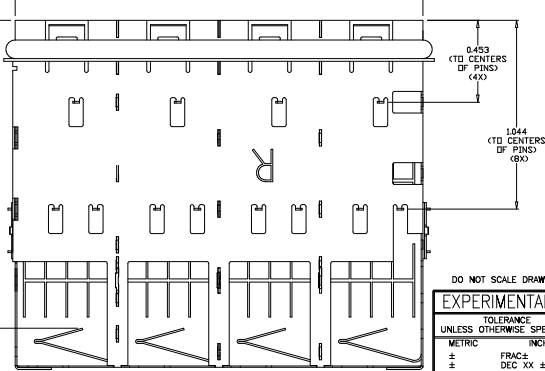
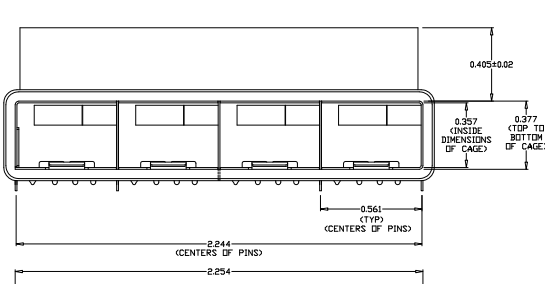
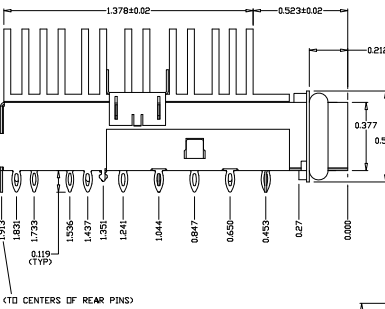
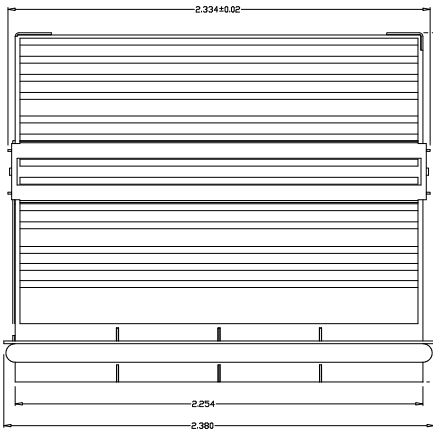
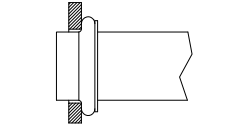
CHASSIS GROUND



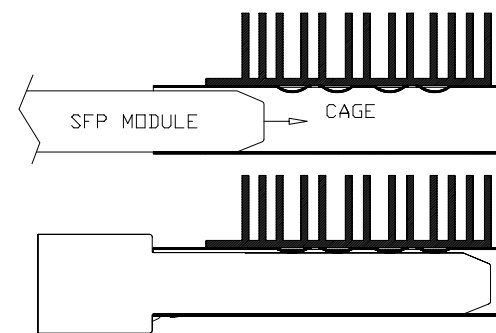
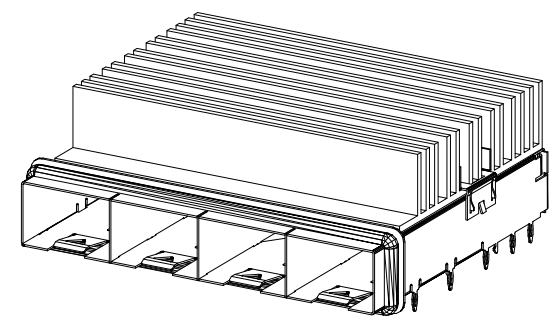
BEFORE INSERTION INTO BEZEL



AFTER INSERTION INTO BEZEL



REVISION AND CHANGE EFFECTIVITY DATE				
LTR.	ECN	DESCRIPTION	DATE	APP'D.



ORDERING INFO:

DM7060-4-E-H-X

SERIES
4 PORTS
ELASTOMERIC GASKET
HEAT SINK

PLATING OPTIONS:

- R FOR 100µIN MATTE TIN OVER 50µIN NICKEL
NOT INTENDED FOR REFLOW
WAVE SOLDER ONLY - WAVE TEMP. 260°C FOR 6 SEC. MAX
RoHS COMPLIANT
- N FOR 60µIN NICKEL
CAGE IS REFLOW COMPATIBLE
MAX REFLOW TEMP. 260°C
RoHS COMPLIANT



NOTES:

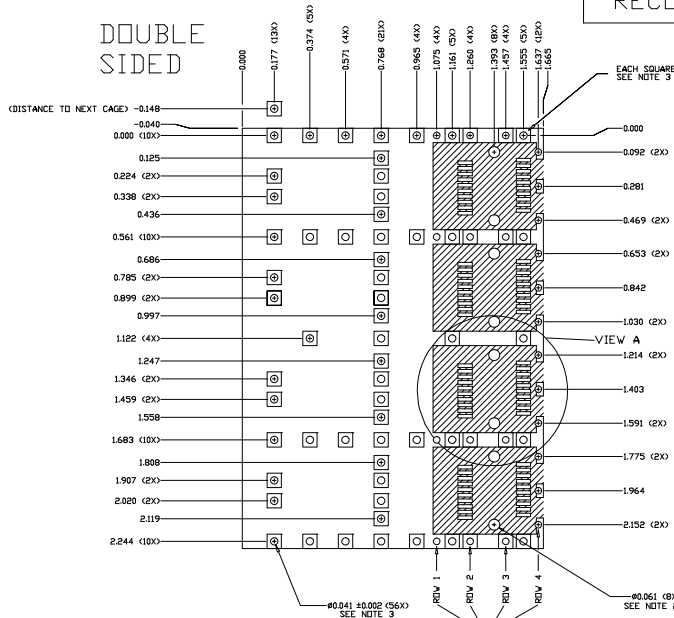
- CAGE AND DIVIDER MATERIAL: 0.010" THICK BRASS, C2680 - FULL HARD
FLANGE MATERIAL: 0.015" THICK BRASS, C2680 - FULL HARD
PLATING FOR CAGE, DIVIDERS, AND FLANGE - SEE ORDERING INFO
- GASKET MATERIAL: ELECTRICALLY CONDUCTIVE ELASTOMER
- HEAT SINK MATERIAL: ALUMINUM
- CLIP MATERIAL: COPPER ALLOY WITH NICKEL PLATING
- OPERATING AND STORAGE TEMPERATURE: -40°C TO +160°C
- CAGE IS SOLDERED AT SEAMS (LEAD FREE SOLDER)

DO NOT SCALE DRAWING.

EXPERIMENTAL NO:		DIVISION ASSIGNED: dataMate Division	
TOLERANCE UNLESS OTHERWISE SPECIFIED		DRAWN BY: A. PIRILLIS DATE: 07/18/11	
METRIC	INCHES	CHECKED BY: J. LLORENS DATE: 07/18/11	
±	FRACTION ± .010	ENGR. APPROVAL: B. SKEPNEK DATE: 07/18/11	
±	DEC. XX ± .005	APPROVED BY: A. CHIAPPETTA DATE: 07/18/11	
±	ANGLES ±	PART NO. CLASSIFICATION:	
±	TOOLING DWG □	SIZE: C CODE IDENT. DWG. NUMBER: DM7060-4-E-H-X Rev.	
±	PART DWG □	SCALE:	
±	BREAK SHARP EDGES	SHT. 1 OF 2	
±	REMOVE ALL BURRS		

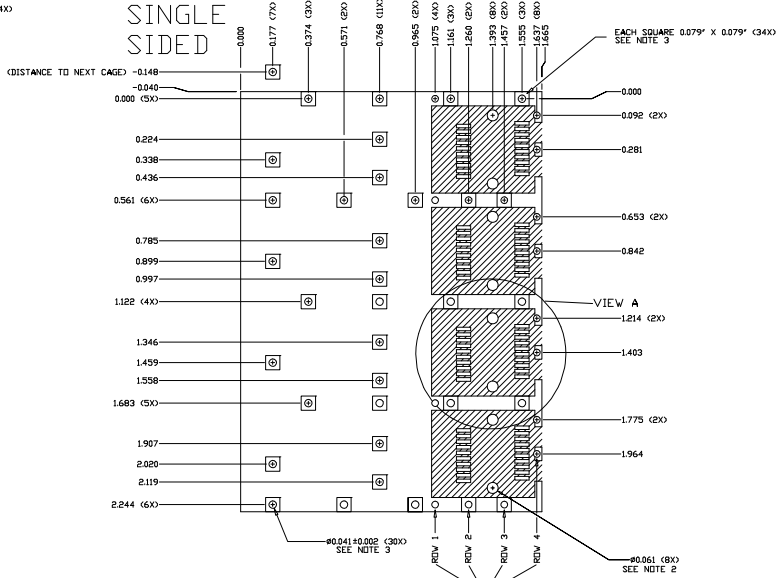
THE INFORMATION DISCLOSED IN THIS DOCUMENT IS PROPRIETARY TO METHODE ELECTRONICS, INC. AND MAY NOT BE USED FOR REPRODUCTION OR ANY OTHER PURPOSE WITHOUT THE WRITTEN CONSENT OF METHODE. DETAILS SUBJECT TO CHANGE AS THEY MAY VARY WITH RESPECT TO PRODUCT IMPROVEMENT.

DOUBLE SIDED



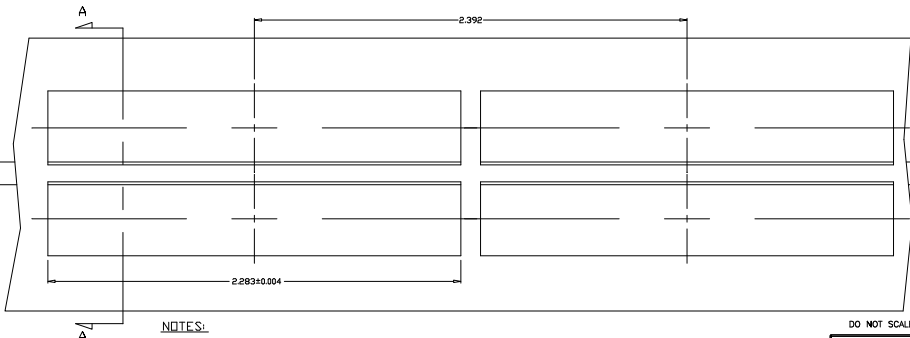
RECOMMENDED FOOTPRINT

SINGLE SIDED



LTR.		ECN		DESCRIPTION	REVISION AND CHANGE EFFECTIVITY DATE	DATE	APP'D.

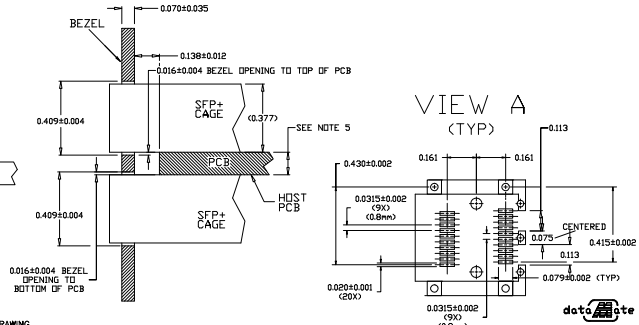
RECOMMENDED PANEL CUTOUT



NOTES:

- 1) DIMENSIONS ARE TO CENTER OF HOLES
- 2) THRU HOLES, PLATING OPTIONAL
- 3) PADS AND VIAS ARE CHASSIS GROUND
- 4) TRACES ONLY NO COMPONENTS
 NO TRACES NO COMPONENTS (EXCEPT CHASSIS GROUND)
- 5) PCB THICKNESS: 0.062" MIN FOR SINGLE SIDED, 0.125" MIN FOR DOUBLE SIDED

SECTION A-A



DO NOT SCALE DRAWING.

EXPERIMENTAL NO:		DIVISION ASSIGNED: dataMate Division	
TOLERANCE UNLESS OTHERWISE SPECIFIED	MATERIAL: SEE NOTES	DRAWN BY: A. PIRILLIS	DATE: 07/18/11
METRIC	FINISH: SEE NOTES	CHECKED BY: J. LLORENS	07/18/11
± FRACTION	± DECIMAL	ENGR. APPROVAL: B. SKEPNEK	07/18/11
± ANGLES	± PART DWG	APPROVED BY: A. CHIAPPETTA	07/18/11
± BREAK SHARP EDGES REMOVE ALL BURRS		PART NO. CLASSIFICATION:	
<p>THE INFORMATION DISCLOSED IN THIS DOCUMENT IS PROPRIETARY TO METHODE ELECTRONICS, INC. AND MAY NOT BE USED FOR MANUFACTURE OR ANY OTHER PURPOSE WITHOUT THE WRITTEN CONSENT OF METHODE. DETAILS SUBJECT TO CHANGE AS THEY MAY CHANGE WITH RESPECT TO PRODUCT APPROACH.</p>			
TITLE: SFP+ EMI 4 PORT CAGE (MULTI-CONTACT) PRESS FIT PINS, HEAT SINK CONDUCTIVE ELASTOMERIC GASKET		SIZE: C	CODE IDENT.
DWS. NUMBER: DM7060-4-E-H-X		Rev.	
SCALE:		SHT. 2 OF 2	