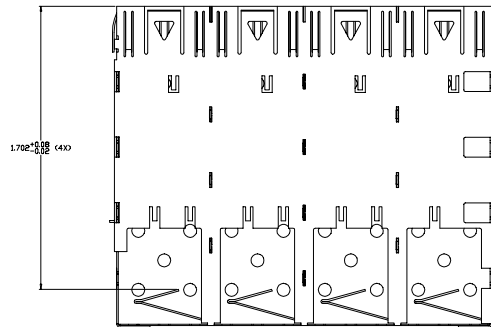
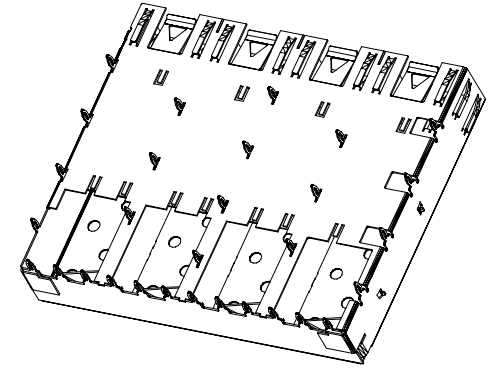
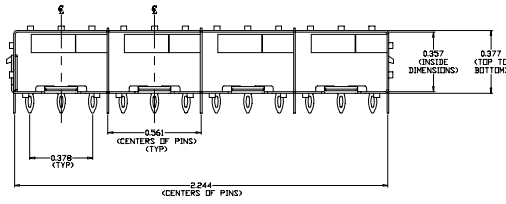
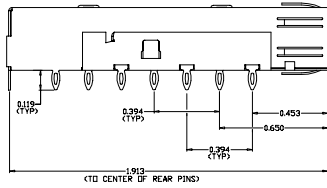
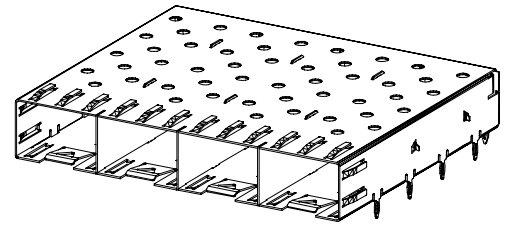
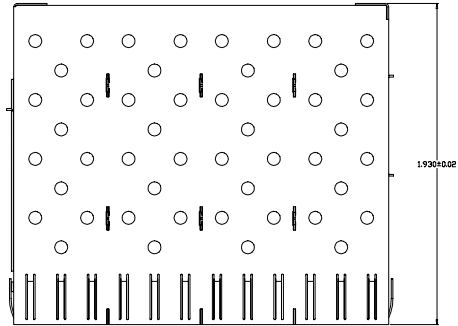
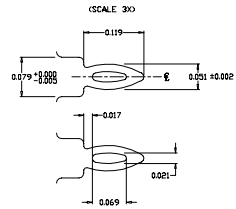


REVISION AND CHANGE EFFECTIVITY DATE				
LTR.	ECN	DESCRIPTION	DATE	APP'D.
A	ECI536	UPDATED PLATING OPTIONS, FOOTPRINT DETAIL A	07/16/07	AP

PRESS FIT PIN DETAIL (30X)



ORDERING INFO:

DM7042-4-X

SERIES

4 PORTS

PLATING OPTIONS:

- R FOR 100µIN MATTE TIN OVER 50µIN NICKEL
NOT INTENDED FOR REFLOW
WAVE SOLDER ONLY - WAVE TEMP. 260°C FDR 6 SEC. MAX
RoHS COMPLIANT
- G FOR FLASH GOLD OVER 50µIN NICKEL
CAGE IS REFLOW COMPATIBLE
MAX REFLOW TEMP. 260°C
RoHS COMPLIANT
- N FOR 100µIN NICKEL
CAGE IS REFLOW COMPATIBLE
MAX REFLOW TEMP. 260°C
RoHS COMPLIANT



DO NOT SCALE DRAWING.

EXPERIMENTAL NO:		DIVISION ASSIGNED: dataMATE Division	
TOLERANCE UNLESS OTHERWISE SPECIFIED	MATERIAL: SEE NOTES	DRAWN BY: A. PIRILLIS	DATE: 11/15/05
ANGLES & TOOLING DWG PART DWG BREAK SHARP ED REMOVE ALL BURRS	FINISH: .010 .005 SEE NOTES	CHECKED BY: J. NOWAK	DATE: 11/15/05
		ENGR. APPROVAL: B. SKEPNEK	DATE: 11/15/05
		APPROVED BY: A. CHIAPPETTA	DATE: 11/15/05
THE INFORMATION DISCLOSED IN THIS DOCUMENT IS PROPRIETARY TO METHODE ELECTRONICS, INC. AND MAY NOT BE USED FOR MANUFACTURE OF ANY OTHER PART.		PART NO. CLASSIFICATION:	
TITLE: SFP EMI 4 PORT CAGE WITH PRESS FIT PINS		SIZE: C	CODE IDENT.:
DWG. NUMBER: DM7042-4-X		Rev.:	A
SCALE:		SHT. 1 OF 2	

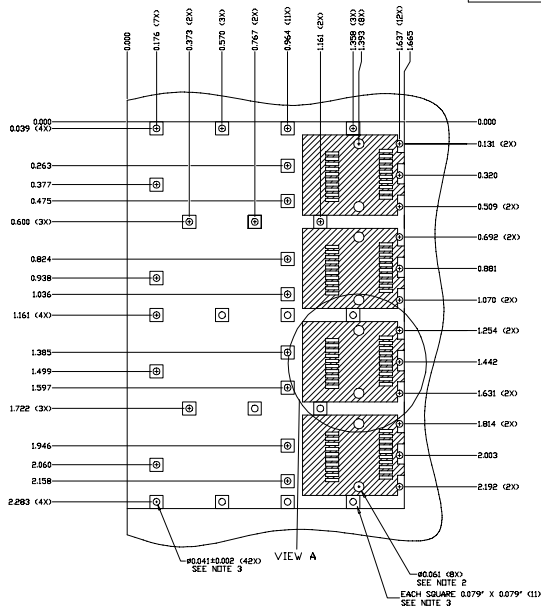
NOTES:

- 1) CAGE MATERIAL: 0.010" THICK BRASS ALLDY; C2680 - FULL HARD
- 2) PLATING: SEE ORDERING INFO
- 3) CAGE IS SOLDERED AT SEAMS (LEAD FREE SOLDER)
- 4) OPERATING AND STORAGE TEMPERATURE: -40°C TO +160°C

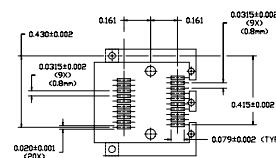
RECOMMENDED FOOTPRINT

REVISION AND CHANGE EFFECTIVITY DATE

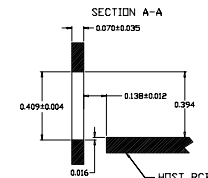
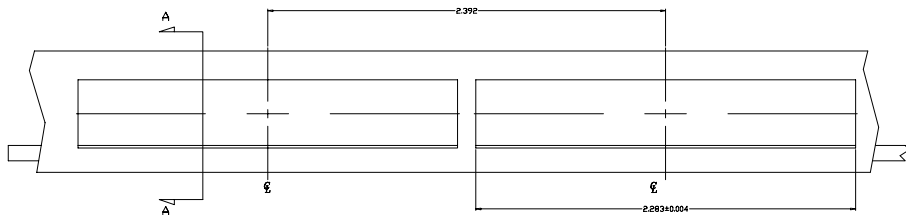
LTR.	ECN	DESCRIPTION	DATE	APP'D.
A	ECI536	UPDATED PLATING OPTIONS, FOOTPRINT DETAIL A	07/16/07	AP



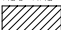

VIEW A (TYP)





RECOMMENDED PANEL CUTOUT



NOTES:

- 1) DIMENSIONS ARE TO CENTER OF HOLES OR PADS
 - 2) THRU HOLES, PLATING OPTIONAL
 - 3) PADS AND VIAS ARE CHASSIS GROUND
- 4)  TRACES ONLY
NO COMPONENTS
-  NO TRACES
NO COMPONENTS
(EXCEPT CHASSIS GROUND)

DO NOT SCALE DRAWING.

EXPERIMENTAL NO:		DIVISION ASSIGNED: dataMate Division	
TOLERANCE UNLESS OTHERWISE SPECIFIED		MATERIAL:	
METRIC ±		SEE NOTES	
INCHES ±		FINISH:	
FRACS: DEC: XX ± .010		DRAWN BY: A. PIRILLIS	
XXX ± .005		DATE: 11/15/05	
ANGLES ±		CHECKED BY: J. NOWAK	
TOOLING DWG 		ENGR. APPROVAL: B. SKEPNEK	
PART DWG 		DATE: 11/15/05	
BREAK SHARP EDGES REMOVE ALL BURRS		APPROVED BY: A. CHIAPPETTA	
		DATE: 11/15/05	
THE INFORMATION DISCLOSED IN THIS DOCUMENT IS PROPRIETARY TO METHODE ELECTRONICS, INC. AND MAY NOT BE USED FOR MANUFACTURE OR ANY OTHER PURPOSE WITHOUT THE WRITTEN CONSENT OF METHODE. DETAILS SUBJECT TO CHANGE AS THEY MAY CHANGE WITH RESPECT TO PRODUCT IMPROVEMENT.		PART NO. CLASSIFICATION:	
TITLE: SFP EMI 4 PORT CAGE WITH PRESS FIT PINS		SIZE: C	
CODE IDENT.		DWG. NUMBER: DM7042-4-X	
SCALE:		Rev. A	
		SHT. 2 OF 2	

